

SAINT LUKE'S PLACE NEWSLETTER

Welcome



Resident Bill of Rights:

Right to an optimal quality of life:

Every resident has the right to share a room with another resident according to their mutual wishes, if appropriate accommodation is available.



Your Residents' Council:

Connie M, Carolyn K, Bill K, Phillip W, Ray C, Roger B, David S, Paul H, Syl W, Ralph K

New Residents and Tenants:

Long Term Care- Anne M,

Deanna S, Robert G, Shirley B, Pearl C, Mary R, Joann R, Helen M, Rosalie E, Carla D

Tenants- Zenon S, Henkdrikus C

WELCOME

We acknowledge that the lands on which our campuses are built are on the traditional territories of many nations. These include the Haldimand Tract, and the traditional territory of the Neutral, Anishinaabe (uh-NISH-ih-NAH-bay) and Haudenosaunee (Hoe-dee-no-SHOW-nay) peoples. These lands are part of the Dish with One Spoon Covenant Wampum between the Haudenosaunee and Anishinaabe peoples.

We also acknowledge the enduring presence of all First Nations, Inuit, and Métis peoples, who continue to live here. Saint Luke's Place respects that Indigenous people have rich cultural and traditional practices and are the traditional stewards of the lands and water upon which our campuses are built.

Saint Luke's Place acknowledges the historical and ongoing injustices that Indigenous Peoples continue to endure in what we now call Canada.

We commit ourselves to gain knowledge, forge new, culturally safe relationships, and contribute to reconciliation.

SAINT LUKE'S PLACE NEWSLETTER

Fundraising and Development



3rd Annual GOLF CLASSIC

Galt Country Club
Monday, September 23, 2024



Mark your calendar's for our 3rd Annual Golf Classic! Hosted at Galt Country Club, the tournament will kick off with lunch followed by a shot-gun start. Stay for prizes, raffle, and dinner. 100% of the proceeds benefit the upgrading of kitchen equipment now and as part of our redevelopment.

For more information or sponsorship opportunities:



aross@stlp.ca

519-685-5183 x 257

www.saintlukesplace.ca/golfclassic

Registration Opens
June 3, 2024

mediSystem
by SHOPPERS DRUG MART

Eagle Sponsor

<https://www.canadahelps.org/en/charities/saint-lukes-place/events/3rd-annual-golf-classic/>

SAVE THE DATE

WWW.SAINTLUKESPLACE.CA

Fundraising and Development

WALK & ROLL UPDATE *thank you*



A huge thank you for the unbelievable support of the return of our annual Walk and Roll event that was held on June 9th!

Collectively, we surpassed our goal of \$8,000, which will directly support Saint Luke's Place! It was an honour to walk and roll alongside our residents, tenants and families.

The kindness made this year's event truly remarkable.

Please check out all the amazing photos from the event on our Facebook page and relive the wonderful memories we created together. A genuine thanks to all of our walkers, rollers and donors - we continue to be inspired by your compassionate and generous support!



**COMING
SOON**

Something Big is Coming

(Hint: It's our biggest campaign for the year)

Stay tuned

Be sure to follow us on social media and on our website at www.saintlukesplace.ca for upcoming information on this campaign

SAINT LUKE'S PLACE NEWSLETTER

Fundraising and Development

WELCOME HOME **CAPITAL CAMPAIGN**

We are moving closer with the Ministry and our expansion of new long-term care beds will change the lives of families who are searching for much-needed care and services for their loved ones.

As a charitable not-for-profit organization, Saint Luke's Place relies upon the generosity of our Community. We are welcoming the support of our community by way of donations and pledges from individuals, families, local service clubs, and the business community as well as from various community fundraising events, planned giving, bequests, and memorial donations.



Learn more about our progress, facility details and how you can join us by helping with donations and volunteer support.

"Giving is not just about making a donation. It is about making a difference."

Contact the Business Office for more information on how you may financially support our exciting project at info@stlp.ca or 519-658-5183



WWW.SAINTLUKESPLACE.CA

SAINT LUKE'S PLACE NEWSLETTER

Long Term Care- Life Enrichment and Programs

WE LOVE PETS VISITING, BUT PLEASE REMEMBER:



Anyone visiting our facility must:
Your pet must be on a leash at all times
Your pet must be well behaved
Your pet must be fully vaccinated
You are responsible for cleaning up after your pet in any area including outside

Any pet visiting long-term care:
You must complete the application for visiting pets with the Business Office **PRIOR** to the visit.

If you have any questions regarding visiting pets in long-term care, please contact: Rachel Feil at rfeil@stlp.ca or at 519-658-5183 ext. 244

NATIONAL DOG WEEK SEPTEMBER 22ND

We want to take this moment to thank our Therapy Dog Volunteers- Nelson, Chelsea, Bo and Dierks as well as their owners for the time they give us weekly to share the unspoken love and connection that comes from animals.



SAINT LUKE'S PLACE NEWSLETTER

Long Term Care- Life Enrichment and Programs

CLASSIC CAR SHOW

September 6th 10:30 to 2:00 pm- D Wing Parking Lot



CHECK YOUR MONTHLY RECREATION CALENDAR POSTED IN YOUR HOME AREA OR ON OUR WEBSITE FOR DAILY EVENTS AND PROGRAMS

memories
CELEBRATION OF LIFE SERVICE
September 25 2:00pm Stauffer Auditorium



SAVE THE DATE

SANTA FOR SENIORS

Our annual Santa for Seniors campaign will kick off November 1st so stay tuned for more information on how to be a "Santa" for a senior here at Saint Luke's Place and spread some smiles and joy this holiday season!

3RD ANNUAL COZY INTO CHRISTMAS CRAFT SALE

Is happening Saturday, November 23rd 10am-2pm in the Stauffer Auditorium. We will be looking for vendors to join our sale! Please contact Rachel Feil, Life Enrichment and Program Manager at rfeil@stlp.ca for a vendor application.

Check out our social media for more information



Long Term Care- Nursing and Infection Prevention and Control

NURSING AND RESIDENT CARE



Skin and Wound Care

The nursing team is excited to be launching the Point Click Care Skin & Wound advanced mobile app designed for wound evaluation, documentation, and status communication across the care team for improved care outcomes.

This is a great initiative to identify residents at risk, manage, and improve skin care for our residents.



As part of our ongoing quality initiatives, many of our Registered Nurses participated in IV Training. It's always good to learn something new or refresh your skills!

Just for your information: We track our nursing staffing, especially over weekends to ensure we have the coverage necessary to provide quality care and services.



Here are the stats:

April 96.5%
May 99.2%
June 98.9%



COVID-19 VACCINES AND BOOSTERS

Authorized by Health Canada, these are safe, reliable, and can help protect you, your family, and our community from COVID-19. The COVID-19 vaccine is free for everyone in Ontario. All residents are encouraged to get the number of doses they are recommended to receive to have the most protection against COVID-19.

Flu Clinics, including RSV and COVID vaccines, will be available in October inhouse by Jenn Coburn, Director of Infection Prevention and Control. For any long-term care resident that is eligible for vaccines, you will be contacted for consent.

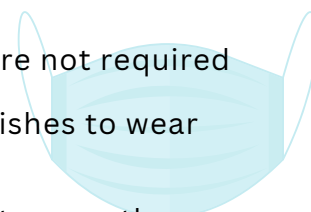
MASKING

We do encourage masking as a “mask friendly” facility, however they are not required at this time.

Masks are available at both entrances to the facility for anyone who wishes to wear one.

We do ask you to not visit if you are not feeling well.

When a resident unit is in outbreak, all staff and visitors are expected to wear the appropriate PPE which may include N95 masks, face shields, and gowns.



SAINT LUKE'S PLACE NEWSLETTER

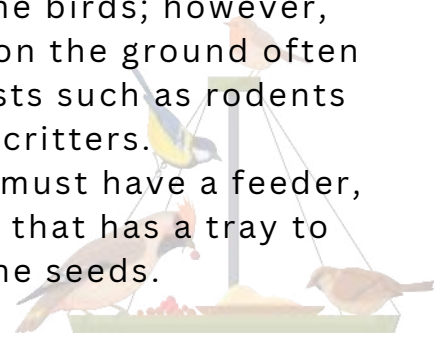
Long Term Care- Environmental and Foodservice



BIRD FEEDERS

We love to watch the birds; however, seeds that overspill on the ground often bring unwanted guests such as rodents and other critters.

We kindly ask, if you must have a feeder, please use the kind that has a tray to catch all the seeds.



The foodservice department provides 3 meals and 3 snacks each day from a menu approved by residents and the Registered Dietitian.

Residents who may want additional food items at or in between meals can have this arranged through the Foodservice Manager or Registered Dietitian.

Although its nice to have families bring in favourite foods, we ask that its not in excess. Bags of food delivered is not always a good thing. Sometimes it is not stored properly in the room, it has the potential to bring pests to the room, and resident unit, or could possibly make the resident sick with foodborne illness from eating food that has spoiled.

Help keep everyone safe. Bring a snack that can be enjoyed during your visit.



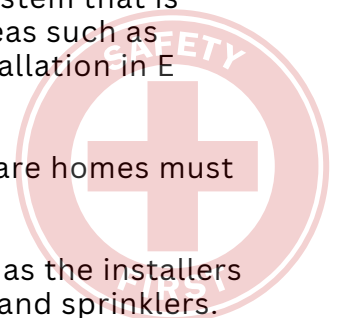
HEALTH AND SAFETY

Fire Sprinklers

We have begun work for the installation of the automatic sprinkler system that is required in all the long-term care areas, including some additional areas such as Stenhouse Hall. So far, the E Lower area has been completed and installation in E Wing has started.

This installation is a prerequisite of the Fire Code that all long-term care homes must comply with by January 2025.

There will be some disruption to our residents during the installation, as the installers will need to drill into the ceiling of each resident room to install lines and sprinklers. They will complete sections at a time that will include up to 6 resident rooms; therefore, we will need to move residents from the working area for their safety.

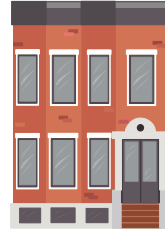


SAINT LUKE'S PLACE NEWSLETTER

Apartments

Your Tenant Representatives:

Kay S C-1 | Dianne S C-2 | Glyn B-J C-3
Paula H DL | George K D-1 | June H D-2 | Ret N D-4



Upcoming Events

- Take me out to the Ball Game and Classic Car Show- September 6th at 10:30 am- D Wing Parking Lot
- Chair Yoga starting September 19th at 10:00am C1 Lounge and October 7th at 1:30pm in D3 Lounge- will run for 8 weeks
- Wii Bowling every Wednesday 7:00pm in C3 Lounge
- SMART Exercises every Wednesday and Friday at 9:30am in the Wellness Centre
- Game Night every Thursday at 7:00pm in D1 Lounge
- Pumpkin Party October 31st
- Clocks go back 1 hour November 3rd



Be sure to check the activity calendars posted on the apartment bulletin boards for all programs and events planned for the month.

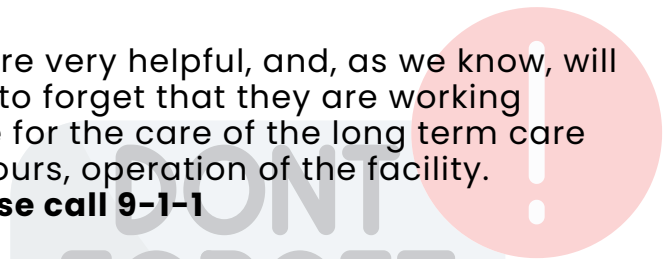
Friendly Reminder For Tenants

Our nursing staff at Saint Luke's Place are very helpful, and, as we know, will go that extra mile. Sometimes it's easy to forget that they are working nurses on the units and are responsible for the care of the long term care residents plus, after regular business hours, operation of the facility.

If you have a medical emergency please call 9-1-1

When You Have Guests

Please remember that the Registered Nurse is required to respond to the doors "after hours" in the case of emergency, but not to let in your guests. You should make your own arrangements to meet guests upon arrival after hours.





Welcome Home



OUR MISSION

Enriching lives in our vibrant seniors community through excellent service and care



OUR VISION

Visionary leader in seniors health and wellness



OUR VALUES

Dignity and Respect
Innovation and Quality
Community and Service
Trust and Integrity
Accountability and Transparency

SAINTLUKESPLACE.CA




SAINT LUKE'S PLACE NEWSLETTER

Remembering

Those we love can never be more than a thought away, for as long as there's a memory they live in our hearts to stay

Bettilou J, Audrey T, William B, Ellen B, Dorothy C, Doreen B,
Margaret P, Frances A, Maureen E, Reta K,
Robert S, Neil B, Anne M, Robert P

Thank you to those who made memorial donations to Saint Luke's Place in memory of your loved one. These donations help Saint Luke's Place provide the best possible care and environment for those who call Saint Luke's Place home.



BEQUESTS

The most common and simple form of planned giving is a bequest. You can make a donation by including Saint Luke's Place as a beneficiary in your will/insurance. Choose the type of bequest that best suits your circumstances and wishes. You retain full control of your assets during your lifetime and your standard of living is not affected.

Your estate will receive significant tax credits that can be passed on to your heirs. Upon receiving the bequest, Saint Luke's Place issues a donation receipt to your estate for the full amount of the bequest.

If you would like more information on how to give, please contact:

Amy Ross- Director of Fundraising and Development at aross@stlp.ca

We are truly grateful for your kind and generous donations

Just for fun

Cars

All the words are hidden vertically, horizontally or diagonally—in both directions. The letters that remain unused form a sentence from left to right.

R I N C R D R A O B H S A D N
O E T A R S B U M P E R I N O
O W H E E L L G L G N I N U T
D H G Y D Y E S T R T R I M S
I E I D N S S C T E R U O E I
N E L O I V E C O U P É R H P
I L E B L N I K R C R O N B P
M S K E Y N D T A O L H A E O
L L A A C G W I T R A U D S F
M I R R O R A A C N B A T O R
C E B C A R I B D A L C M C A
N U F A C D T L R S T O U R H
E R S T A O E L O I O O K F O
S P A R K P L U G R A L R A L
T E R N A S T L E B T A E S T
I V T A E S K C A B E N S O U
R P M A L G O F C E S T O F E
N E T H E A D L I G H T R G Y

AIRBAG
BACK SEAT
BODY
BRAKE LIGHT
BRAKES
BUMPER
CLUTCH
COOLANT
COUPÉ
CYLINDER
DASHBOARD
DIESEL
DOOR
FOG LAMP
HANDLE
HEADLIGHT
HORN
INDICATORS
MIRROR
PEDALS
PISTON
RADIATOR
RIMS
SEAT
SEAT BELT
SPARK PLUG
TUNING
TURBO
WHEEL
WHEELS





Welcome Home
FOLLOW US, LIKE US + TAG US!



[FACEBOOK.COM/SAINTLUKESPLACE/](https://www.facebook.com/saintlukesplace/)

[@SAINTLUKESPLACECAMBRIDGE](https://www.instagram.com/saintlukesplacecambridge)

WHEN YOU'RE HERE, YOU'RE HOME





Happy Thanksgiving

Don't forget to be grateful everyday.